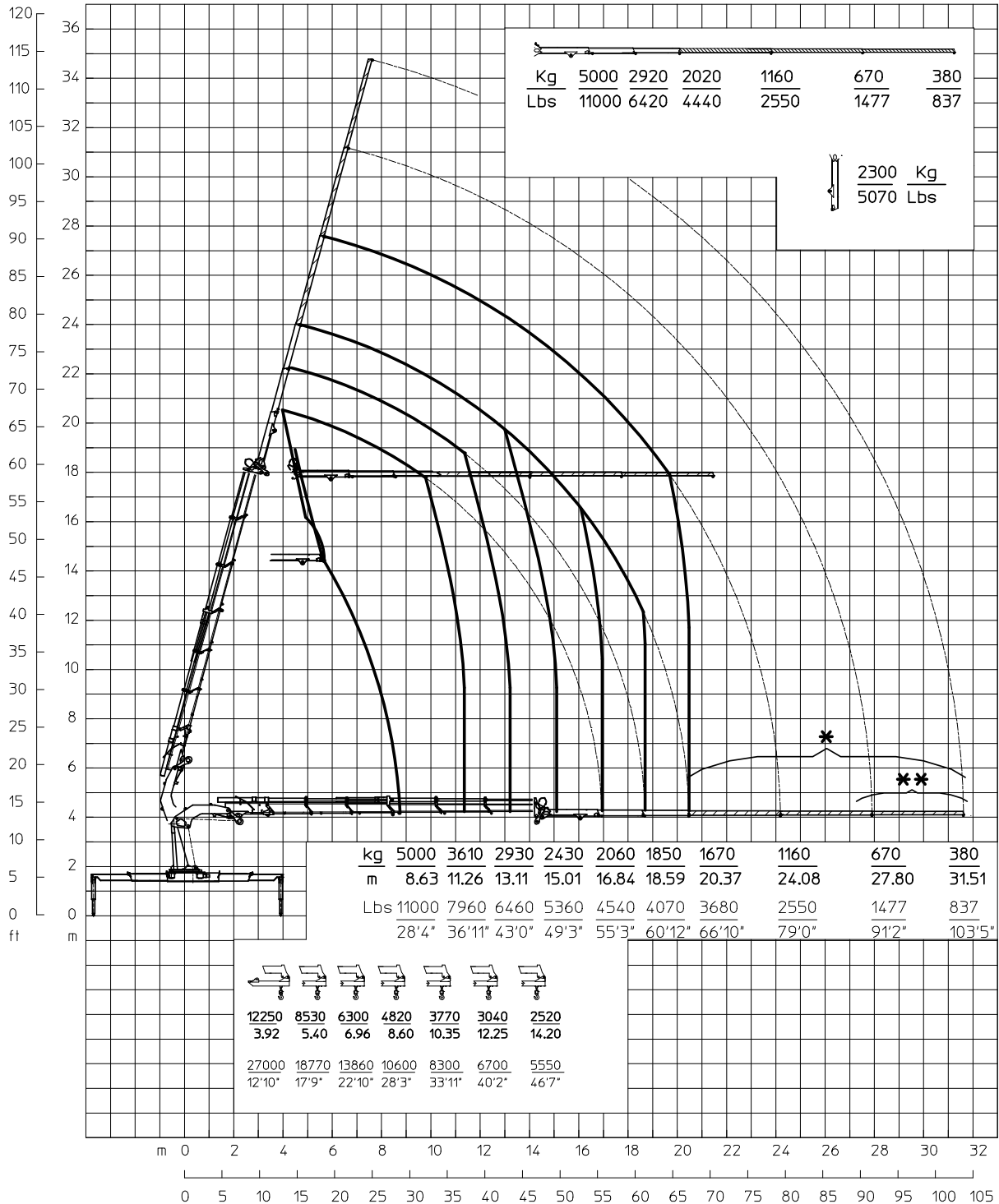


- (\*) GANCIO FISSO (OPZIONE)
- (\*) FIXED HOOK (OPTIONAL)
- (\*) CROCHET FIXE (OPTIONAL)
- (\*) FESTEM HAKEN (OPTIONAL)
- (\*\*) FORNIBILI SOLO IN PAESI EXTRA CEE
- (\*\*) AVAILABLES ONLY FOR COUNTRIES OUTSIDE EEC
- (\*\*) SEULEMENT POUR LE PAYS NON CEE
- (\*\*) LIEFERBAR AUSSERHALB DER EEE

I carichi sfilabili in verticale dipendono dall'angolo del braccio e dallo stato dei pattini.  
The size of the loads that can be handled when extending the boom in vertical position are depending from the angle and the conditions of the wear pads.

PROLUNGHE MANUALI	MANUAL EXTENSIONS	RALLONGES MANUELLES	MANUELLE VERLAENGERUNGEN	PROLONGAS MECANICAS														
m 12	13	14	15	16	17	18	19	20	21	22	23	24	25	26	27	28	29	30
ft 40	45	50	55	60	65	70	75	80	85	90	95	100						
	1^	2^	3^	4^	5^	**	6^											
	Kg	2680	2300	1700	1420	460	240											
	m	5900	5060	3747	3130	1014	529											

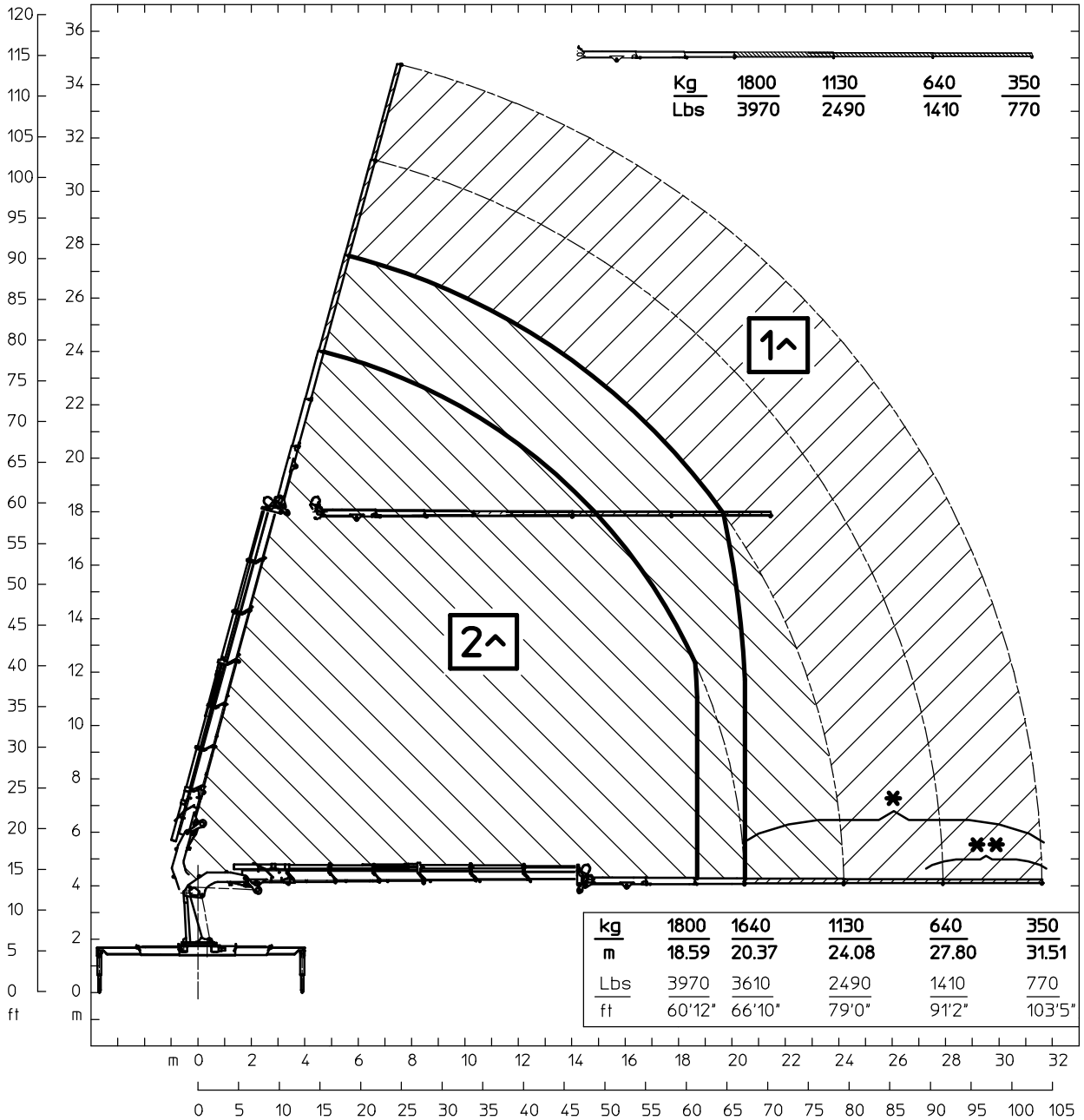




- \* Prolunghe manuali non rientranti fornibili in opzione.
- \* Non-reentering manual extensions supplied as option.
- \* Rallonges manuelles non rentrantes qui peuvent etre fournies comme option.
- \* Nicht einziehbar Verlaengerungen (gegen Anfrage).

- (\*\*) Fornibili solo in paesi extraCEE
- (\*\*) Available only for countries outside EEC
- (\*\*) Seulement pour le pays non CEE
- (\*\*) Lieferbar Ausserhalb der EEG

I carichi sfilabili in verticale dipendono dall'angolo di inclinazione tra il JIB ed il braccio principale e dallo stato dei pattini.  
The size of the loads that can be handled when extending the boom in vertical position are depending from the angle between the JIB and the main boom and the conditions of the wear pads.



PORTATE REALIZZABILI SOLAMENTE CON L'AUSILIO DELL'ARGANO.

Tiro max diretto: 900 daN  
 Velocita' max fune: 36 m/min  
 Massa bozzello e rinvii: 25 Kg  
 Massa verricello con fune: 70 Kg

CHARGES REALISABLES AVEC SEULE AIDE DU TREUIL

Tir max direct: 900 daN  
 Vitesse max cable: 36 m/min  
 Masse poulie et renvois: 25 Kg  
 Treuil + cable: 70 Kg

CAPACITY THAT CAN BE ACHIEVED ONLY WITH WINCH

Max pull one line: 900 daN  
 Max rode speed: 36 m/min  
 Block and pulleys: 25 Kg  
 Winch + wire rope: 70 Kg

DIE TRAGFAHIGKEITEN SIND NUR MIT HILFE DER WINDE ERZIELBAR

Direkter hochstzug: 900 daN  
 Seilhochstgeschwindigkeit: 36 m/min  
 Koblenmasse und umlenkung: 25 Kg  
 Winde + seil: 70 Kg

- \* Prolunghe manuali non rientranti fornibili in opzione.
- \* Non-reentering manual extensions supplied as option.
- \* Rallonges manuelles non rentrantes qui peuvent etre fournies comme option.
- \* Nicht einziehbar Verlaengerungen (gegen Anfrage).

- (\*\*) Fornibili solo in paesi extraCEE
- (\*\*) Available only for countries outside EEC
- (\*\*) Seulement pour le pays non CEE
- (\*\*) Lieferbar Ausserhalb der EEG